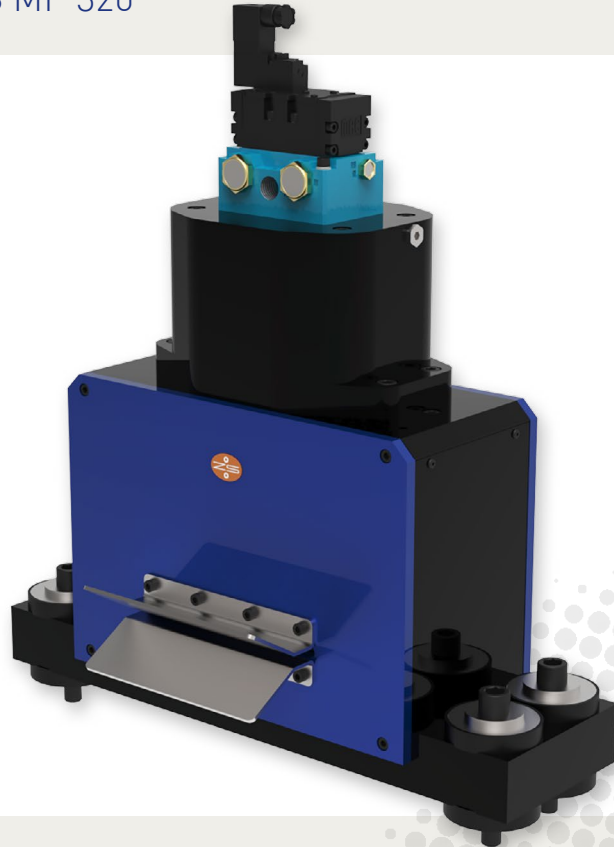


# PNEUMATIC CUTTING SHEARS TS MP

Models: TS MP 160 | TS MP 320



## POWERFULL SEPARATION

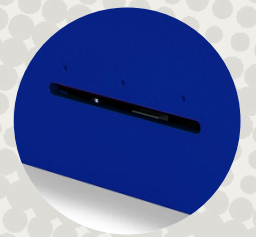
- Dynamic pneumatic impact system with solenoid valve 24 DC
- Knife made of special steel, regrindable
- Cutting force infinitely variable

## PRECISE CUTTING

- Solid pillar guides with ball bushings
- Reversible cutter bar and useable twice
- Easier and preciser cutting gap setting
- Precision shears for cut to length application

## OPTIMIZED

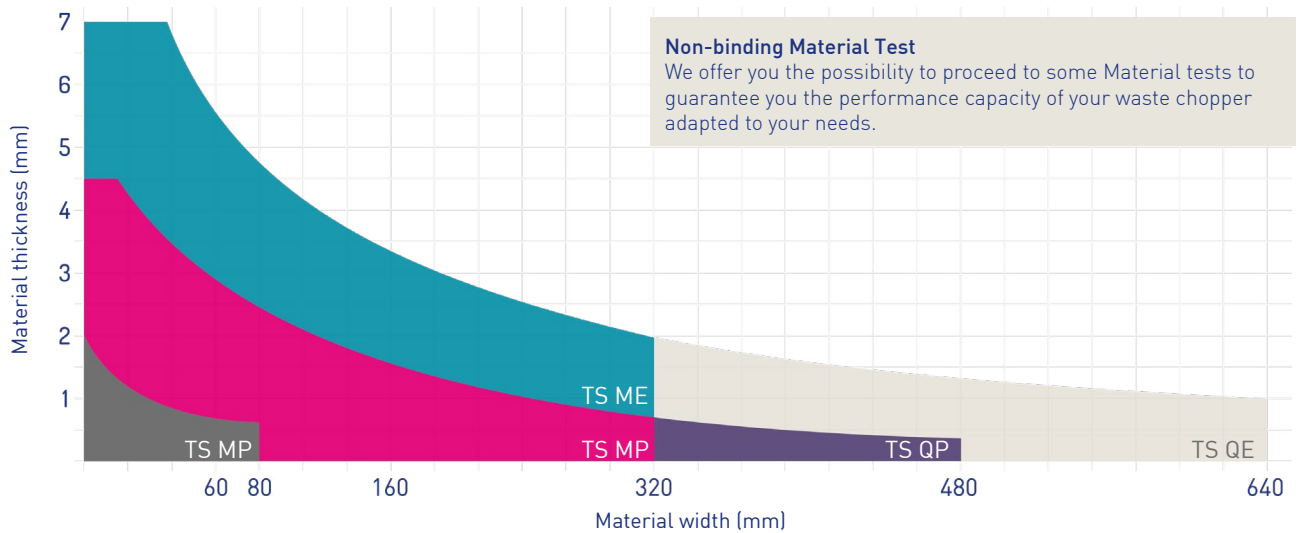
- Optional elimination of chopped waste thanks ameliorated outlet
- Optional access for cleaning and exchange cutter
- Optional sensors for position monitoring
- Steamer feet for absorbing vibration and noise



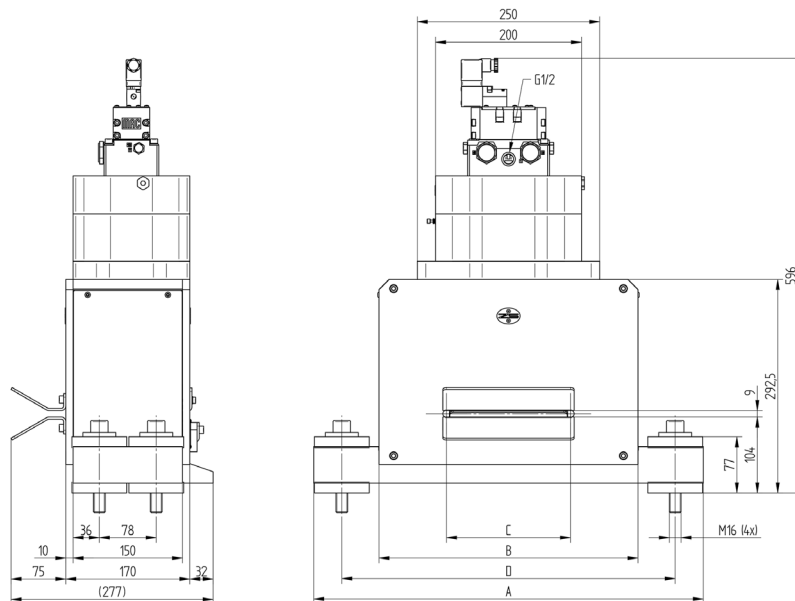
# PNEUMATIC CUTTING SHEARS TS MP



PERFORMANCE



TECHNICAL SPECIFICATIONS



MODEL	TS MP	160	320
Cutting width max. (mm)		160	320
Support width A (mm)		534	714
Body width B (mm)		354	535
Opening width C (mm)		170	330
Mounting distance D (mm)		457	637
Material height max. (mm)			7
Cutting force max. (kN)			40
Air consumption per stroke at 8 bar approx. (l)			4.5
Cycle time (ms)		70	120
Weight (kg)		60	75

## SWITZERLAND

Zehnder & Sommer AG  
CH-3400 Burgdorf  
info@zehndersommer.com  
Tel +41 31 800 00 00

## GERMANY

Zehnder & Sommer GmbH  
DE-58452 Witten  
info@zehndersommer.de  
Tel +49 2302 981 60 30

zehndersommer.com  
ZSswiss.com